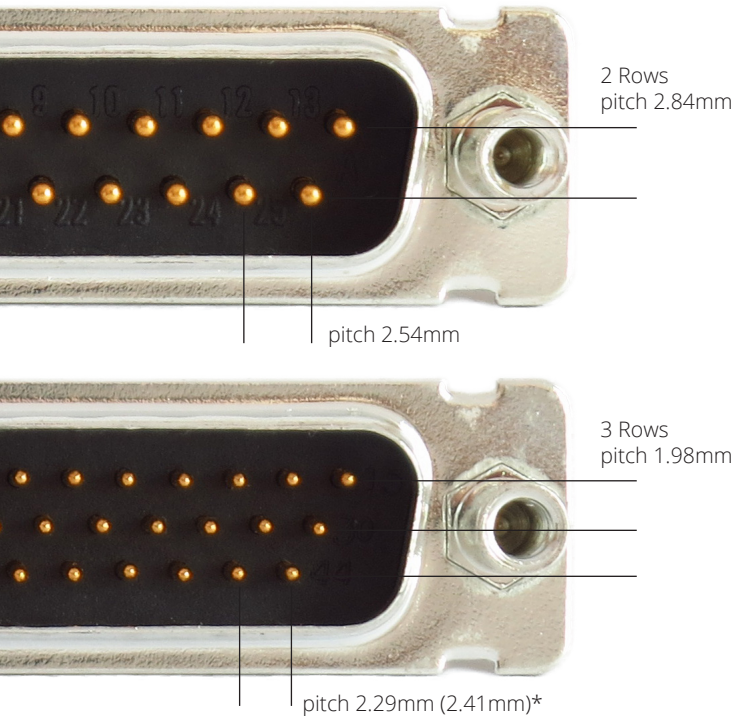


Standard and High Density D-Sub

KD

KH



Standard Density

The Standard Density D-Sub is the original D-Sub created some 50 years ago, the Standard Density D-Sub have signal contacts with current rating of 5A. There are 5 sizes with connector mating layouts ranging from 9 positions to 50 positions. This connector is widely used in industrial applications worldwide.

High Density

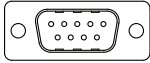
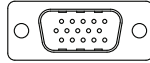
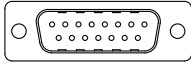
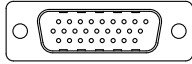
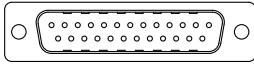
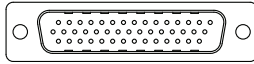
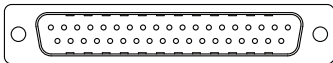
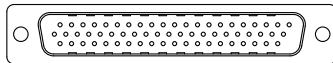
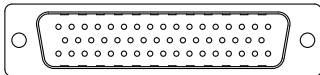
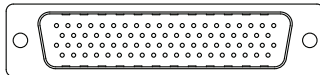
The High Density D-Sub have the same size as the Standard Density connector but hold more contacts in its insulator. For a Standard Density 9 position connector the High Density holds 15 positions, for a 15 position Standard Density connector, the High Density holds 26 positions, and so on, see Tech Specs for more details. The High Density connector have a drawback in comparison and that is the current rating which is only 3Aas the Standard Density have 5A . *62pos and 78pos have different pitch.

Tech Spec

	Standard Density	High Density
Material Data		
Insulator	Polyester GF UL94V-0	
Insulator color	● ● ● ●	● ●
Contacts	Precision machined copper alloy	
Contact plating	Hard Gold plated over Nickel	
Shell	Steel, dimples on Male shell	
Shell plating	Tin plated over Nickel or Nickel plating	
Electrical Data		
Current rating (at room temp)	5.0 A	3.0 A
Working Voltage	125 V	60 V
Dielectric strenght / Test Voltage	Contact - contact 1000 V r.m.s.	
Contact resistance	< 10mΩ	
Insulation resistance	>5GΩ	
Mechanical Data		
Creepage distance	1.0mm	0.6mm
Operating Temperature	Temp -55°C to +125°C	
Quality Class	Quality Class 1 = 500 Mating Cycles, 30μ" (0.8μm) Gold over Nickel) Quality Class 3 = 50 Mating Cycles 8μ" (0.2μm) Gold over Nickel For other plating alternatives contact factory	

Standard and High Density D-Sub

Layout

	Standard Density	High Density
Size 1(E)	 <p>9 pos</p>	 <p>15 pos</p>
Size 2(A)	 <p>15 pos</p>	 <p>26 pos</p>
Size 3(B)	 <p>25 pos</p>	 <p>44 pos</p>
Size 4(C)	 <p>37 pos</p>	 <p>62 pos</p>
Size 5(D)	 <p>50 pos</p>	 <p>78 pos</p>

KD
KH

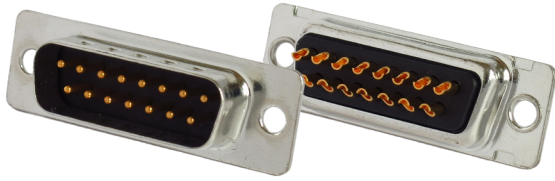
Standard Density KD Series

Solder cup

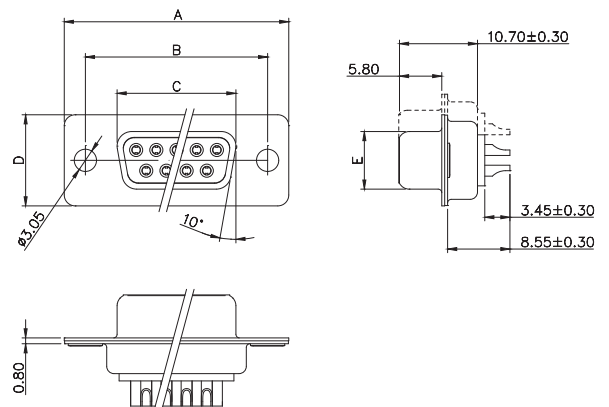
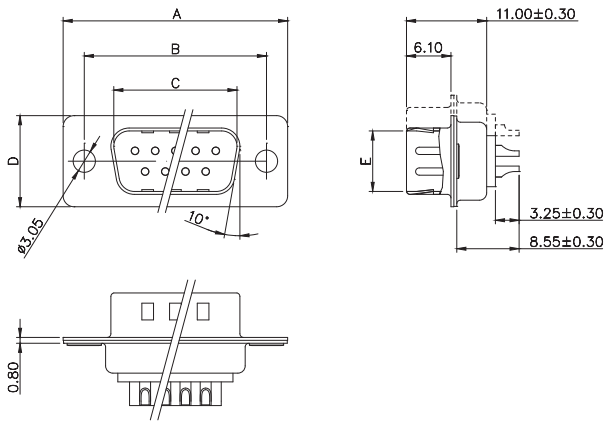
Male

Female

KD



Drawing



No. of pos.	A	B	C	D	E
09	30.80	25.00	16.90	12.50	8.30
15	39.20	33.30	25.25	12.50	8.30
25	53.05	47.05	38.95	12.50	8.30
37	69.40	63.50	55.40	12.50	8.30
50	67.00	61.00	52.80	15.30	11.15

No. of pos.	A	B	C	D	E
09	30.80	25.00	16.30	12.50	7.90
15	39.20	33.30	24.60	12.50	7.90
25	53.05	47.05	38.40	12.50	7.90
37	69.40	63.50	54.80	12.50	7.90
50	67.00	61.00	52.20	15.30	10.90

Part Number Code

Series: KD = Standard Density D-Sub **KD S 4 -15 M T B A1**

Terminal type:
S = Solder cup

Contact plating*:
4 = Quality Class 3 (standard)
3 = Quality Class 1

Number of positions:
09 = 9 pos 15 = 15 pos 25 = 25 pos
37 = 37 pos 50 = 50 pos

Mounting*:
A1 = Mounting hole
B1 = B1 with 4-40 UNC
B6 = B6 with M3

See mounting drawings below for more details

Insulator color:
B = Black (standard) W = White G = Green L = Blue

Shell plating*:
T = Tin (standard) N = Nickel

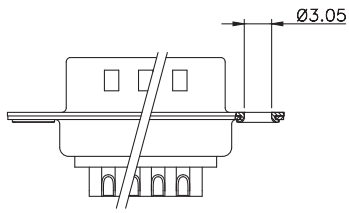
Gender:
M = Male F = Female

Standard Density KD Series

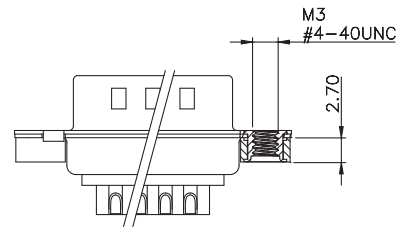
Solder cup
Mounting

KD

A1



B1/B6



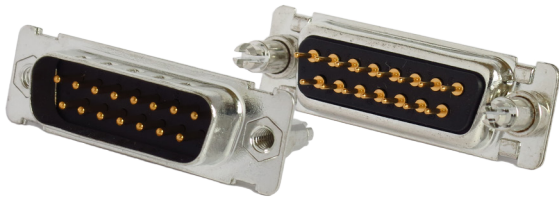
Standard Density KD Series

Straight PCB solder

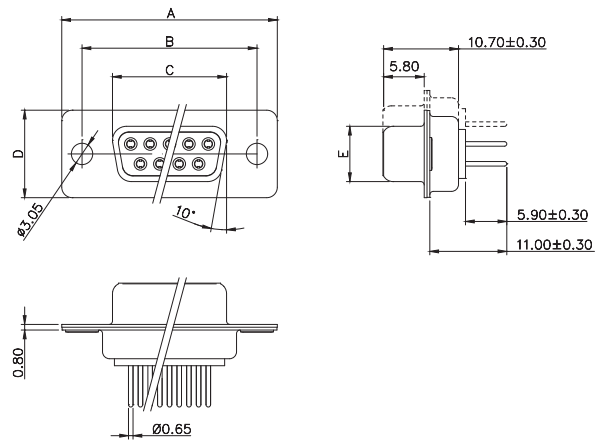
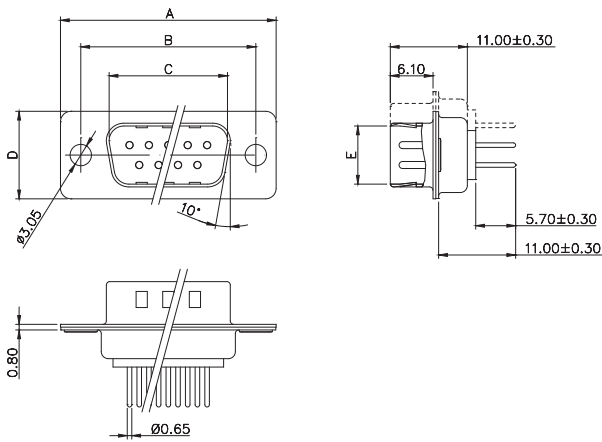
Male

Female

KD



Drawing



No. of pos.	A	B	C	D	E
09	30.80	25.00	16.90	12.50	8.30
15	39.20	33.30	25.25	12.50	8.30
25	53.05	47.05	38.95	12.50	8.30
37	69.40	63.50	55.40	12.50	8.30
50	67.00	61.00	52.80	15.30	11.15

No. of pos.	A	B	C	D	E
09	30.80	25.00	16.30	12.50	7.90
15	39.20	33.30	24.60	12.50	7.90
25	53.05	47.05	38.40	12.50	7.90
37	69.40	63.50	54.80	12.50	7.90
50	67.00	61.00	52.20	15.30	10.90

Part Number Code

Series:
KD = Standard Density D-Sub **KD T 4 -15 M T B C1**

Terminal type:
T = Straight PCB solder

Contact plating*:
4 = Quality Class 3 (standard)
3 = Quality Class 1

Number of positions:
09 = 9 pos **15** = 15 pos **25** = 25 pos
37 = 37 pos **50** = 50 pos

Gender:
M = Male **F** = Female

Mounting*:
A1 = A1 No threads **B8** = B8 with M3
B1 = B1 with 4-40 UNC **C1** = C1 with 4-40 UNC
B2 = B2 with 4-40 UNC **C2** = C2 with 4-40 UNC
B3 = B3 with 4-40 UNC **C6** = C6 with M3
B6 = B6 with M3 **C7** = C7 with M3
B7 = B7 with M3

See mounting drawings below for more details

Insulator color:
B = Black (standard) **W** = White **G** = Green **L** = Blue

Shell plating*:
T = Tin (standard) **N** = Nickel

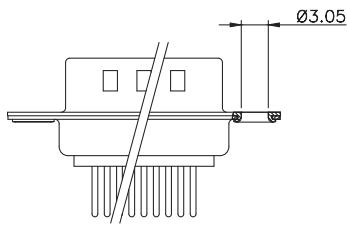
*Contact sales for more details, Konmek have a wide range of alternatives available.

Standard Density KD Series

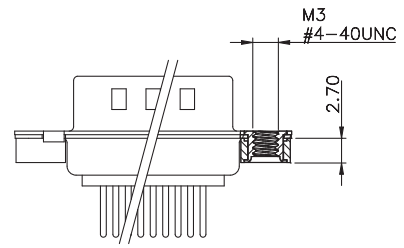
Straight PCB solder Mounting

KD

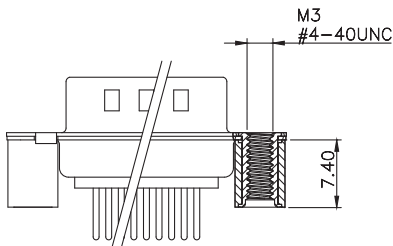
A1



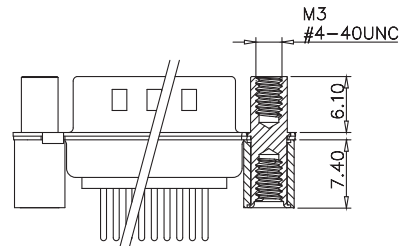
B1/B6



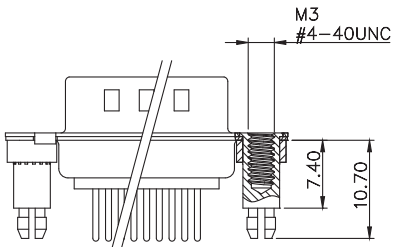
B2/B7



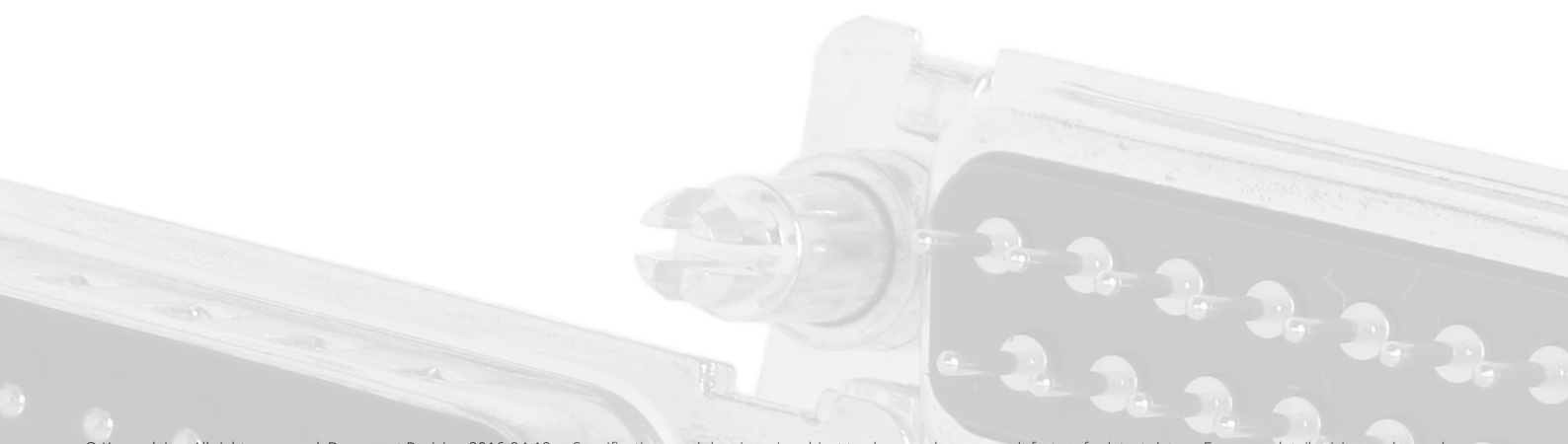
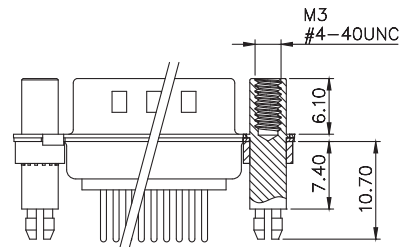
B3/B8



C1/C6



C2/C7



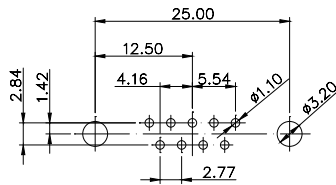
Standard Density KD Series

Straight PCB solder

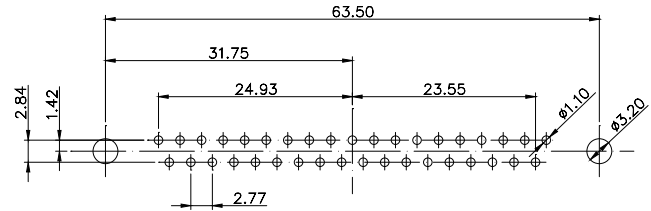
PCB Layout for Male and Female connector

KD

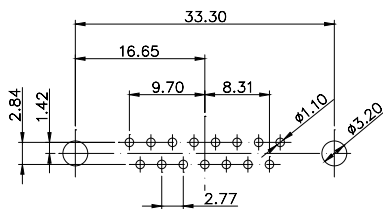
9 pos



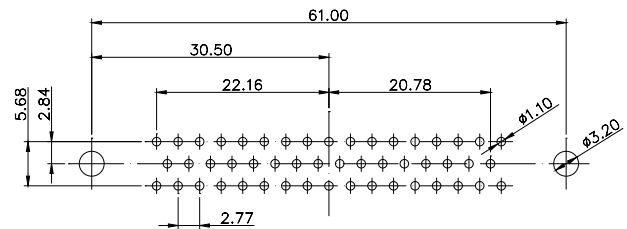
37 pos



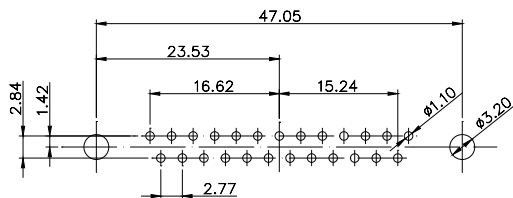
15 pos



50 pos



25 pos



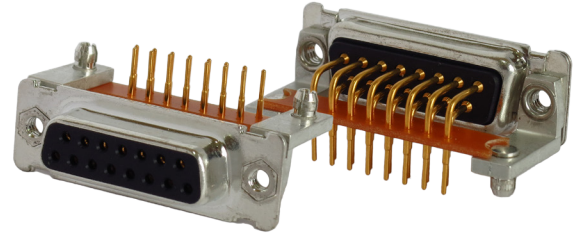
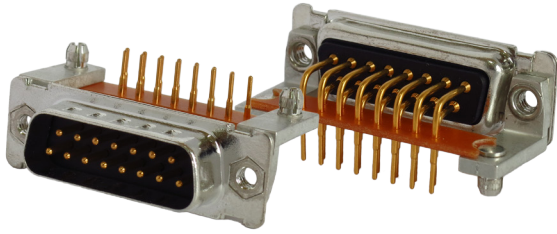
Standard Density KD Series

7.2mm R/A PCB solder

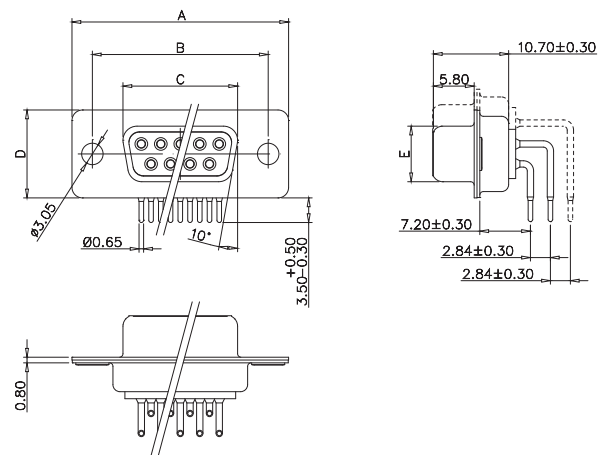
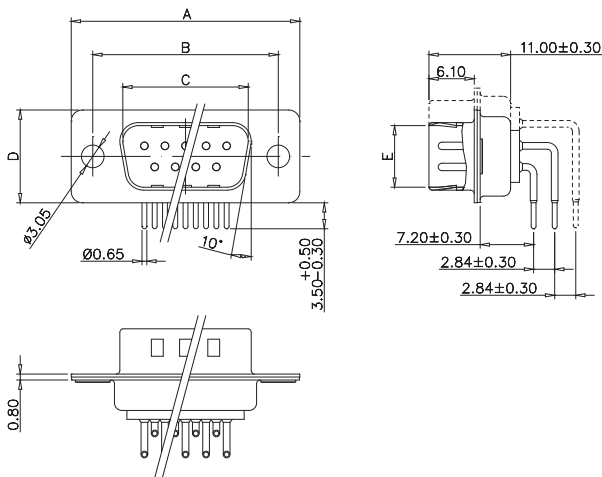
Male

Female

KD



Drawing



No. of pos.	A	B	C	D	E
09	30.80	25.00	16.90	12.50	8.30
15	39.20	33.30	25.25	12.50	8.30
25	53.05	47.05	38.95	12.50	8.30
37	69.40	63.50	55.40	12.50	8.30
50	67.00	61.00	52.80	15.30	11.15

No. of pos.	A	B	C	D	E
09	30.80	25.00	16.30	12.50	7.90
15	39.20	33.30	24.60	12.50	7.90
25	53.05	47.05	38.40	12.50	7.90
37	69.40	63.50	54.80	12.50	7.90
50	67.00	61.00	52.20	15.30	10.90

Part Number Code

Series:
KD = Standard Density D-Sub **KD R7 4 -15 M T B D1**

Terminal type:
R7 = 7.2mm R/A PCB solder

Contact plating*:
4 = Quality Class 3 (standard)
3 = Quality Class 1

Number of positions:
09 = 9 pos **15** = 15 pos **25** = 25 pos
37 = 37 pos **50** = 50 pos

Gender:
M = Male **F** = Female

Mounting*:
A1 = A1 No threads **D4** = D4 with 4-40 UNC
B1 = B1 with 4-40 UNC **D6** = D6 with M3
B6 = B6 with M3 **D7** = D7 with M3
D1 = D1 with 4-40 UNC **D8** = D8 with M3
D2 = D2 with 4-40 UNC **D9** = D9 with M3
D3 = D3 with 4-40 UNC

See mounting drawings below for more details

Insulator color:
B = Black (standard) **W** = White **G** = Green **L** = Blue

Shell plating*:
T = Tin (standard) **N** = Nickel

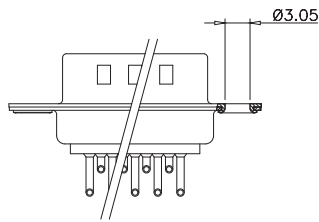
*Contact sales for more details, Konmek have a wide range of alternatives available.

Standard Density KD Series

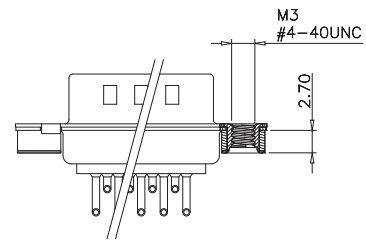
7.2mm R/A PCB solder
Mounting

KD

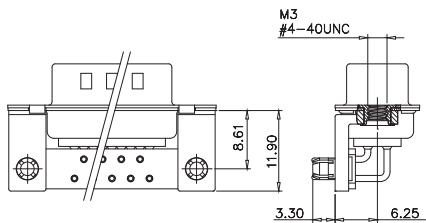
A1



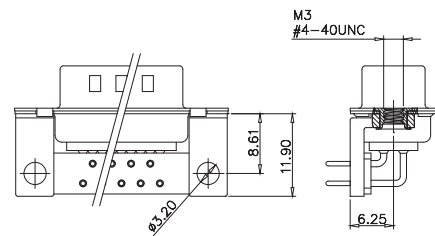
B1/B6



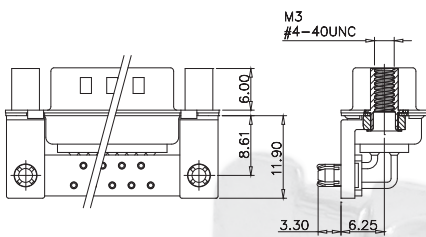
D1/D6



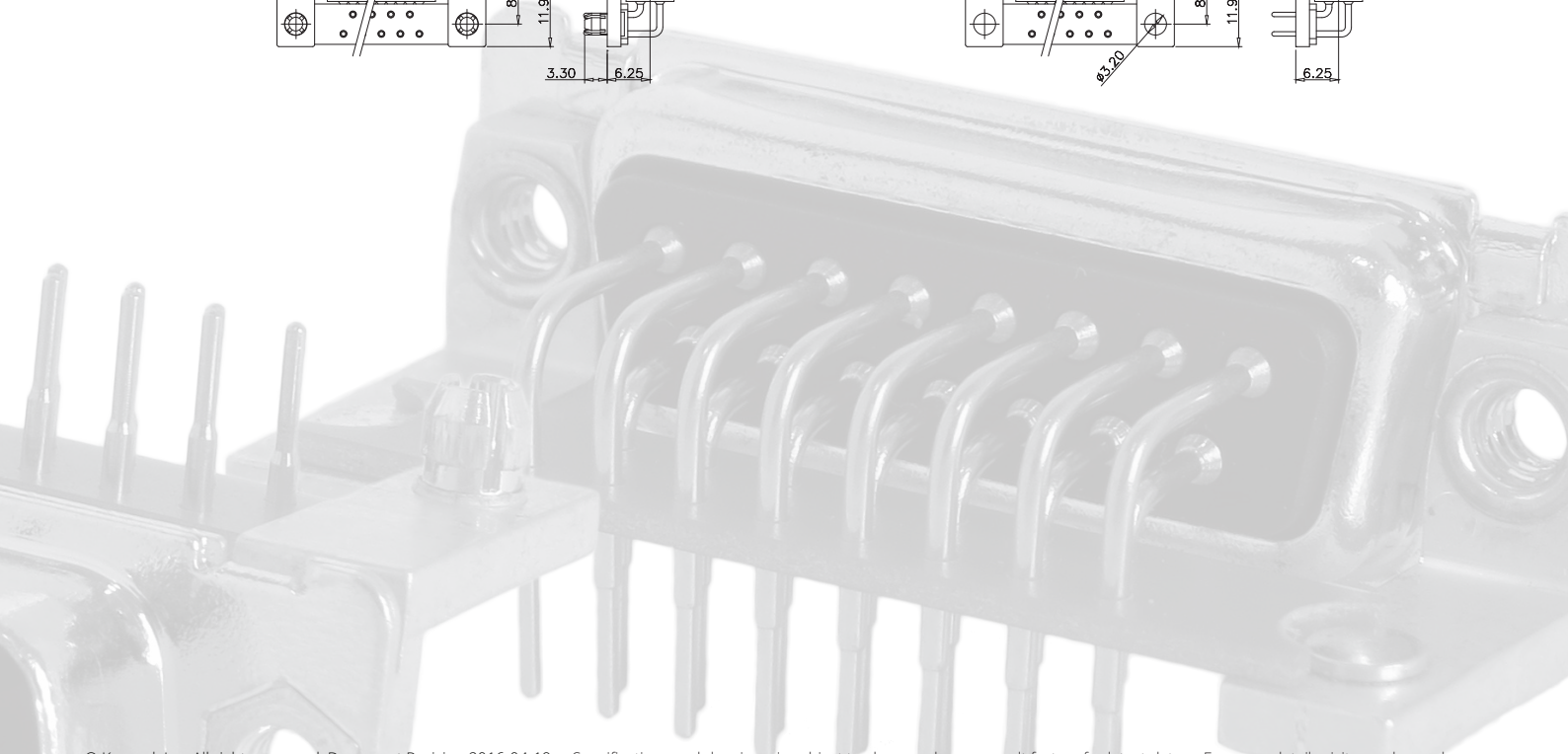
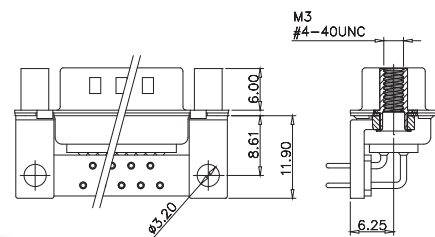
D2/D7



D3/D8



D4/D9



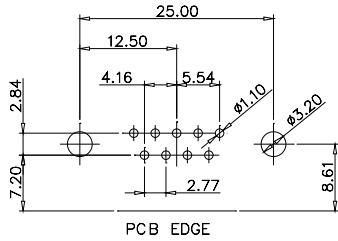
Standard Density KD Series

7.2mm R/A PCB solder

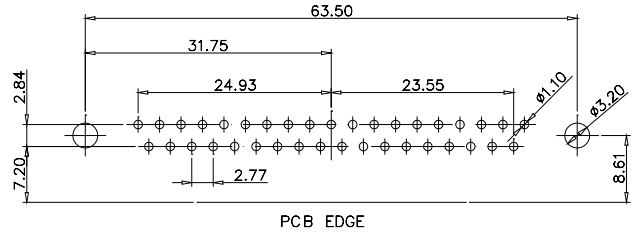
PCB Layout for Male and Female connector

KD

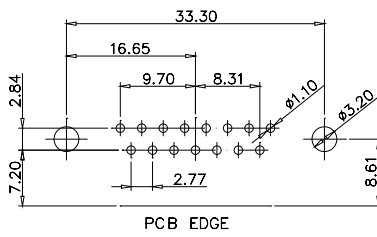
9 pos



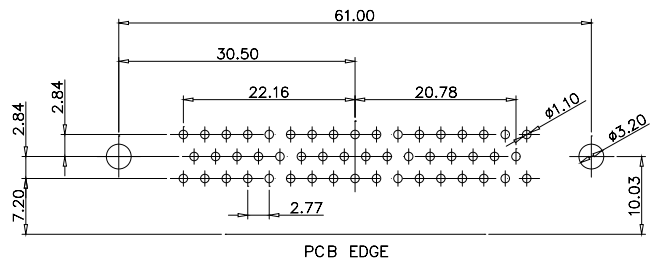
37 pos



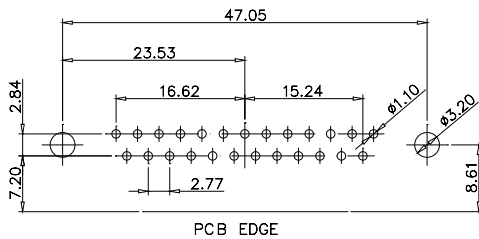
15 pos



50 pos



25 pos



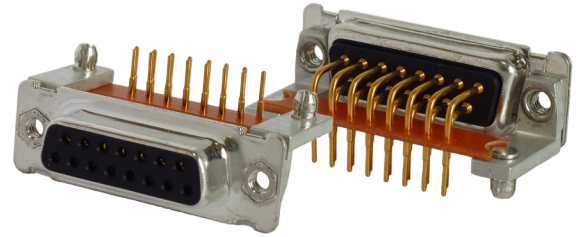
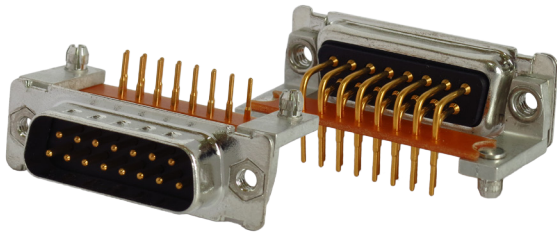
Standard Density KD Series

9.4mm R/A PCB solder

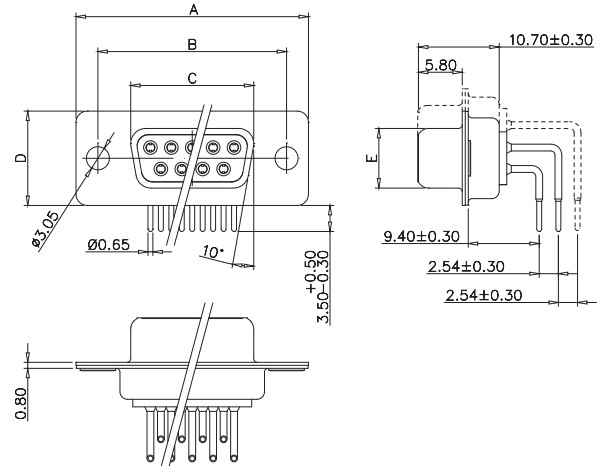
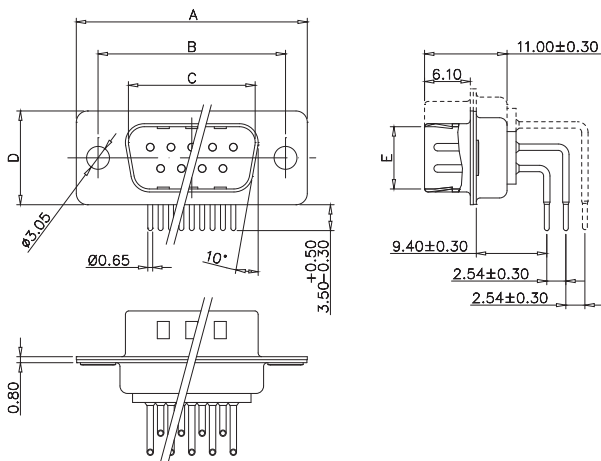
Male

Female

KD



Drawing



No. of pos.	A	B	C	D	E
09	30.80	25.00	16.90	12.50	8.30
15	39.20	33.30	25.25	12.50	8.30
25	53.05	47.05	38.95	12.50	8.30
37	69.40	63.50	55.40	12.50	8.30
50	67.00	61.00	52.80	15.30	11.15

No. of pos.	A	B	C	D	E
09	30.80	25.00	16.30	12.50	7.90
15	39.20	33.30	24.60	12.50	7.90
25	53.05	47.05	38.40	12.50	7.90
37	69.40	63.50	54.80	12.50	7.90
50	67.00	61.00	52.20	15.30	10.90

Part Number Code

Series: KD R9 4 -15 M T B D1
 KD = Standard Density D-Sub

Terminal type: R9 = 9.4mm R/A PCB solder

Contact plating*:
 4 = Quality Class 3 (standard)
 3 = Quality Class 1

Number of positions:
 09 = 9 pos 15 = 15 pos 25 = 25 pos
 37 = 37 pos 50 = 50 pos

Gender:
 M = Male F = Female

Mounting*:
 A1 = A1 No threads D4 = D4 with 4-40 UNC
 B1 = B1 with 4-40 UNC D6 = D6 with M3
 B6 = B6 with M3 D7 = D7 with M3
 D1 = D1 with 4-40 UNC D8 = D8 with M3
 D2 = D2 with 4-40 UNC D9 = D9 with M3
 D3 = D3 with 4-40 UNC

See mounting drawings below for more details

Insulator color:
 B = Black (standard) W = White G = Green L = Blue

Shell plating*:
 T = Tin (standard) N = Nickel

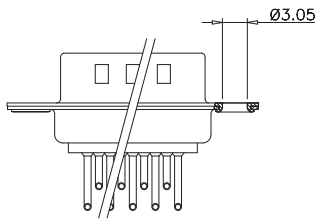
*Contact sales for more details, Konmek have a wide range of alternatives available.

Standard Density KD Series

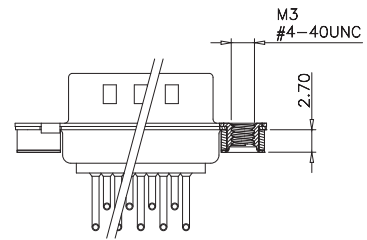
9.4mm R/A PCB solder
Mounting

KD

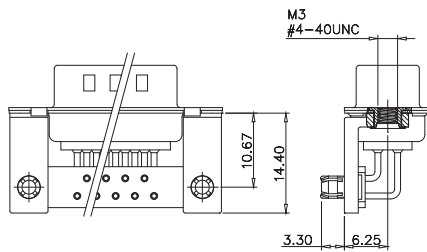
A1



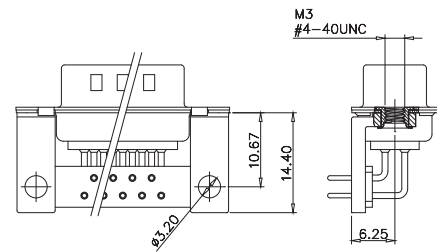
B1/B6



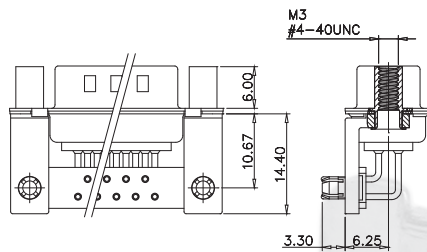
D1/D6



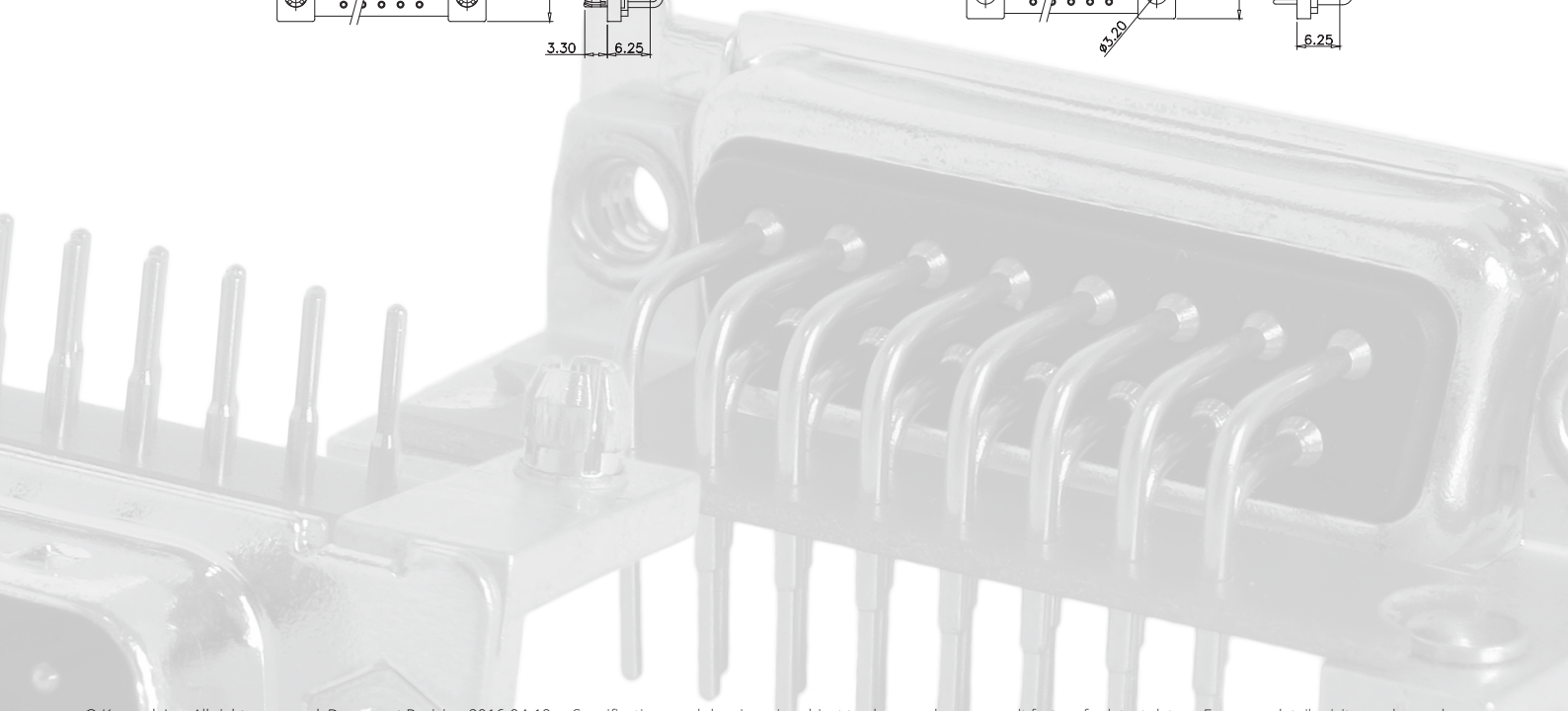
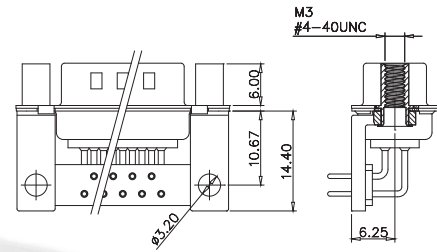
D2/D7



D3/D8



D4/D9



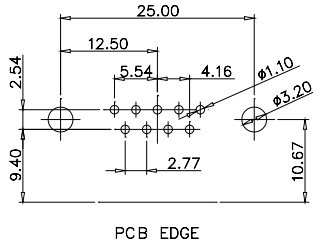
Standard Density KD Series

9.4mm R/A PCB solder

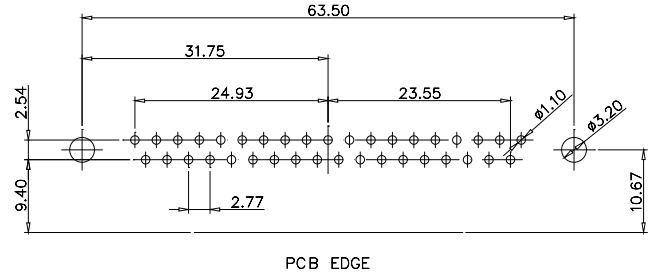
PCB Layout for Male and Female connector

KD

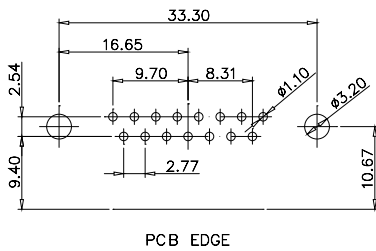
9 pos



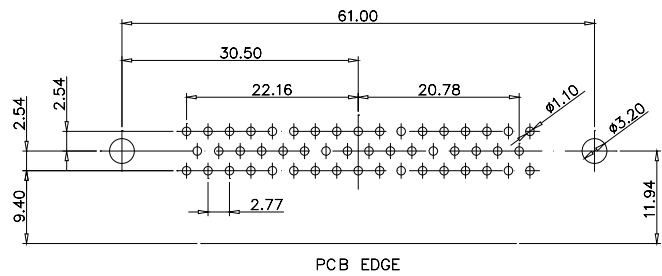
37 pos



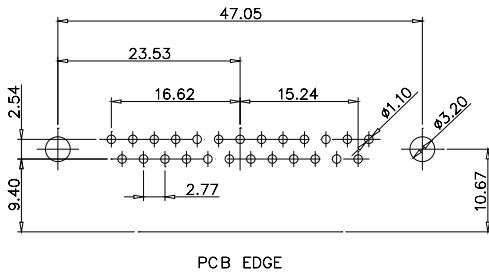
15 pos



50 pos



25 pos



High Density KH Series

Solder cup

Male

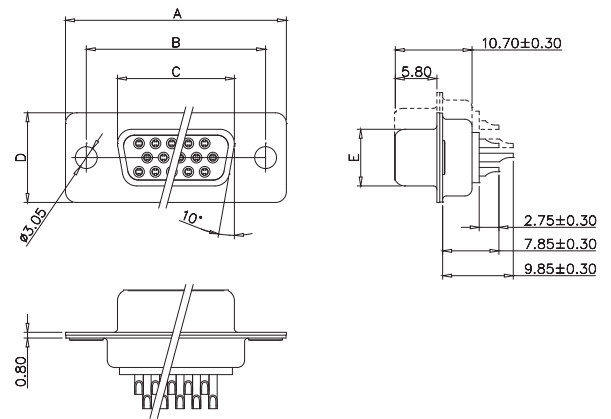
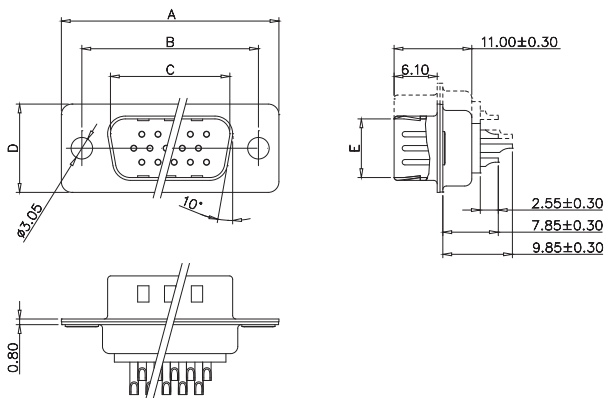


Female



KH

Drawing



No. of pos.	A	B	C	D	E
15	30.80	25.00	16.90	12.50	8.30
26	39.20	33.30	25.25	12.50	8.30
44	53.05	47.05	38.95	12.50	8.30
62	69.40	63.50	55.40	12.50	8.30
78	67.00	61.00	52.80	15.30	11.15

No. of pos.	A	B	C	D	E
15	30.80	25.00	16.30	12.50	7.90
26	39.20	33.30	24.60	12.50	7.90
44	53.05	47.05	38.40	12.50	7.90
62	69.40	63.50	54.80	12.50	7.90
78	67.00	61.00	52.20	15.30	10.90

Part Number Code

Series: KH S 4 -26 M T B H1

KH = High Density D-Sub

Terminal type:

S = Solder cup

Contact plating*:

4 = Quality Class 3 (standard)

3 = Quality Class 1

Number of positions:

15 = 15 pos 26 = 26 pos 44 = 44 pos

62 = 62 pos 78 = 78 pos

Mounting*:

A1 = Mounting hole

B1 = B1 with 4-40 UNC

B6 = B6 with M3

See mounting drawings below for more details

Insulator color:

B = Black (standard) W = White

Shell plating*:

T = Tin (standard)

N = Nickel

Gender:

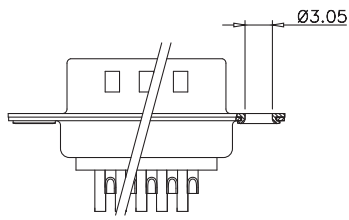
M = Male F = Female

*Contact sales for more details, Konmek have a wide range of alternatives available.

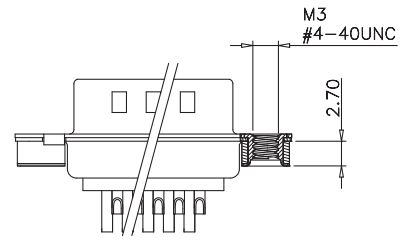
High Density KH Series

Solder cup
Mounting

A1



B1/B6



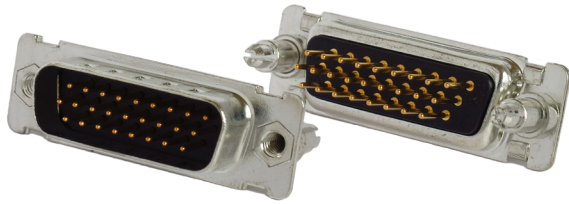
KH



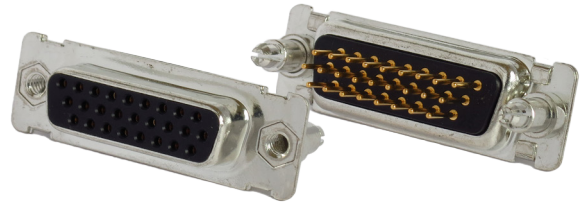
High Density KH Series

Straight PCB solder

Male

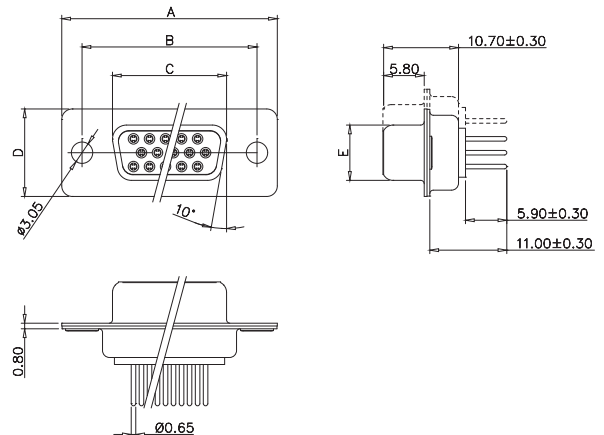
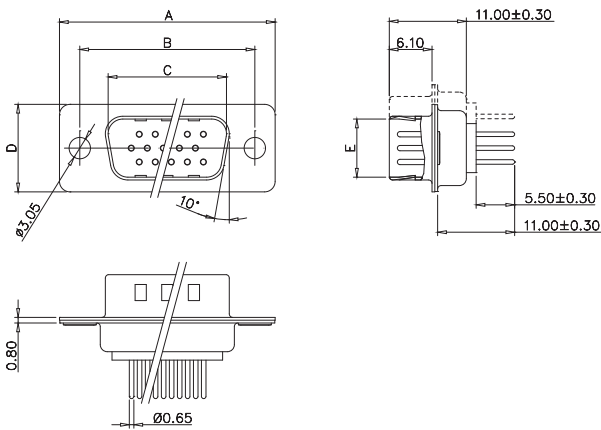


Female



KH

Drawing



No. of pos.	A	B	C	D	E
15	30.80	25.00	16.90	12.50	8.30
26	39.20	33.30	25.25	12.50	8.30
44	53.05	47.05	38.95	12.50	8.30
62	69.40	63.50	55.40	12.50	8.30
78	67.00	61.00	52.80	15.30	11.15

No. of pos.	A	B	C	D	E
15	30.80	25.00	16.30	12.50	7.90
26	39.20	33.30	24.60	12.50	7.90
44	53.05	47.05	38.40	12.50	7.90
62	69.40	63.50	54.80	12.50	7.90
78	67.00	61.00	52.20	15.30	10.90

Part Number Code

Series: KH = High Density D-Sub **KH T 4 -26 M T B C1**

Terminal type: T = Straight PCB solder

Contact plating*:
 4 = Quality Class 3 (standard)
 3 = Quality Class 1

Number of positions:
 15 = 15 pos 26 = 26 pos 44 = 44 pos
 62 = 62 pos 78 = 78 pos

Gender:
 M = Male F = Female

Mounting*:
 A1 = A1 No threads B8 = B8 with M3
 B1 = B1 with 4-40 UNC C1 = C1 with 4-40 UNC
 B2 = B2 with 4-40 UNC C2 = C2 with 4-40 UNC
 B3 = B3 with 4-40 UNC C6 = C6 with M3
 B6 = B6 with M3 C7 = C7 with M3
 B7 = B7 with M3

See mounting drawings below for more details

Insulator color:
 B = Black (standard) W = White

Shell plating*:
 T = Tin (standard) N = Nickel

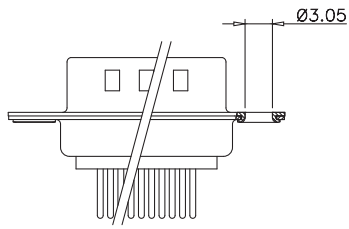
*Contact sales for more details, Konmek have a wide range of alternatives available.

High Density KH Series

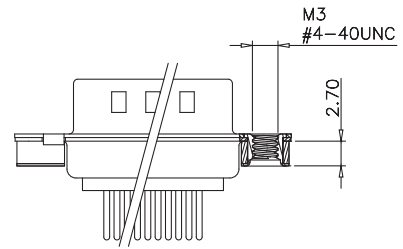
Straight PCB solder Mounting

KH

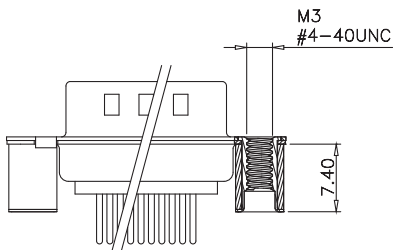
A1



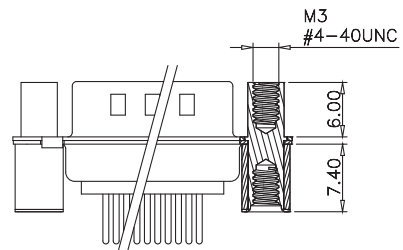
B1/B6



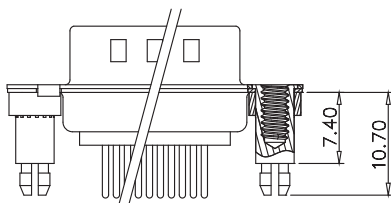
B2/B7



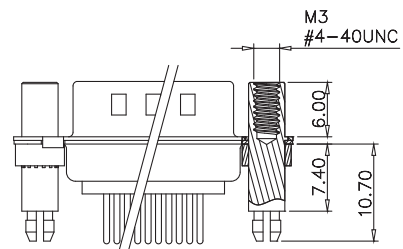
B3/B8



C1/C6



C2/C7



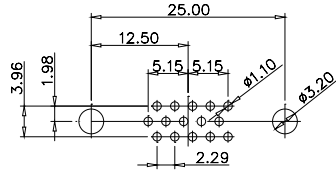
High Density KH Series

Straight PCB solder

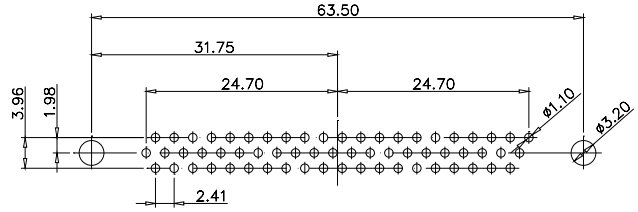
PCB Layout for Male connector

KH

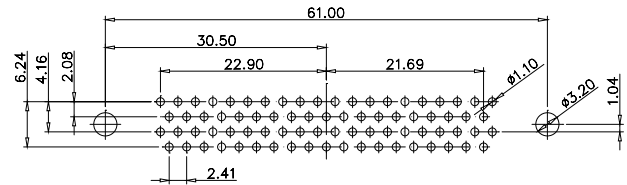
15 pos



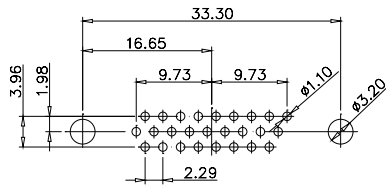
62 pos



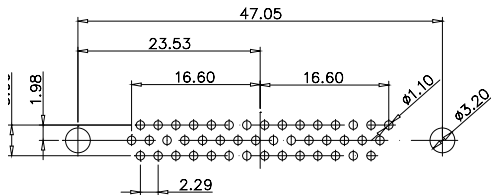
78 pos



26 pos



44 pos



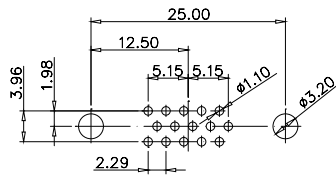
High Density KH Series

Straight PCB solder

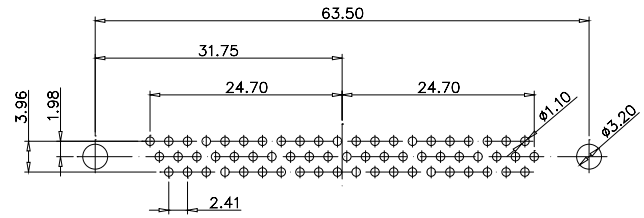
PCB Layout for Female connector

KH

15 pos

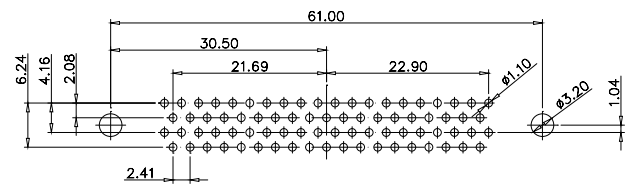
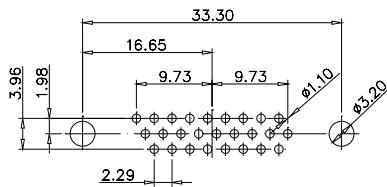


62 pos

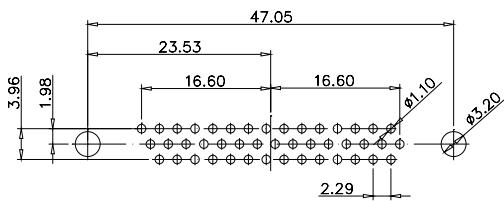


78 pos

26 pos



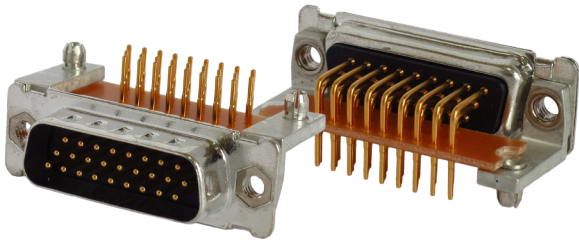
44 pos



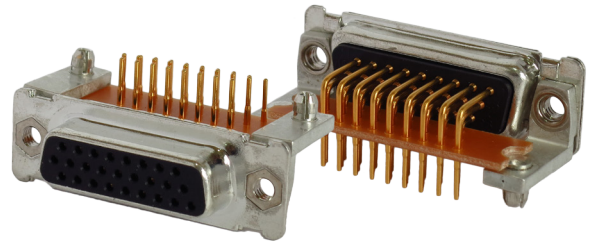
High Density KH Series

R/A PCB solder

Male

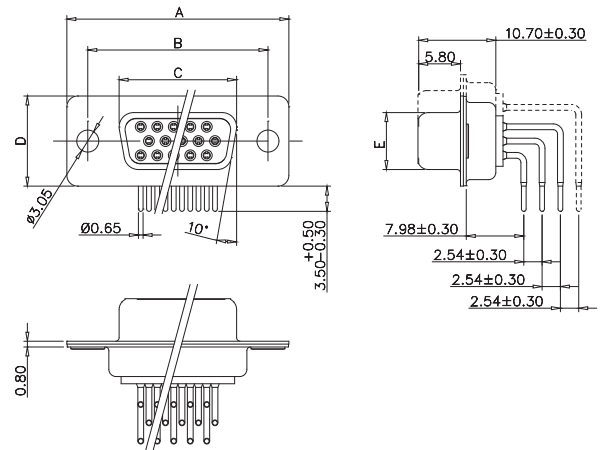
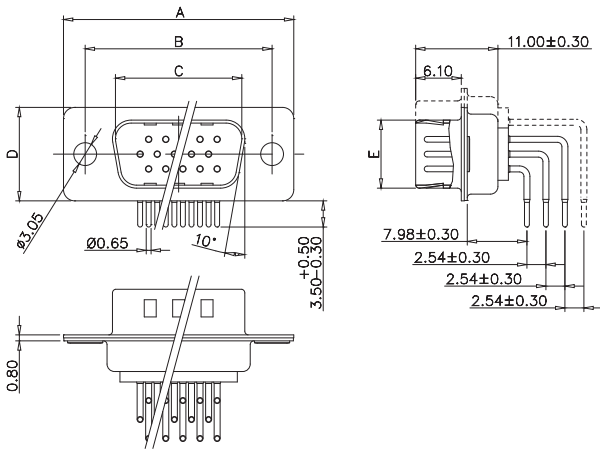


Female



KH

Drawing



No. of pos.	A	B	C	D	E
15	30.80	25.00	16.90	12.50	8.30
26	39.20	33.30	25.25	12.50	8.30
44	53.05	47.05	38.95	12.50	8.30
62	69.40	63.50	55.40	12.50	8.30
78	67.00	61.00	52.80	15.30	11.15

No. of pos.	A	B	C	D	E
15	30.80	25.00	16.30	12.50	7.90
26	39.20	33.30	24.60	12.50	7.90
44	53.05	47.05	38.40	12.50	7.90
62	69.40	63.50	54.80	12.50	7.90
78	67.00	61.00	52.20	15.30	10.90

Part Number Code

Series:
KH = High Density D-Sub **KH R 4 -26 M T B D1**

Terminal type:
R = R/A PCB solder

Contact plating*:
4 = Quality Class 3 (standard)
3 = Quality Class 1

Number of positions:
15 = 15 pos 26 = 26 pos 44 = 44 pos
62 = 62 pos 78 = 78 pos

Gender:
M = Male F = Female

Mounting*:
A1 = A1 No threads D4 = D4 with 4-40 UNC
B1 = B1 with 4-40 UNC D6 = D6 with M3
B6 = B6 with M3 D7 = D7 with M3
D1 = D1 with 4-40 UNC D8 = D8 with M3
D2 = D2 with 4-40 UNC D9 = D9 with M3
D3 = D3 with 4-40 UNC

See mounting drawings below for more details

Insulator color:
B = Black (standard) W = White

Shell plating*:
T = Tin (standard) N = Nickel

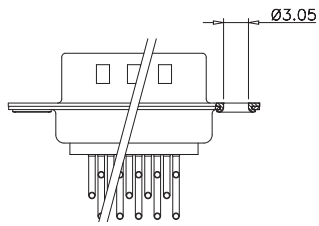
*Contact sales for more details, Konmek have a wide range of alternatives available.

High Density KH Series

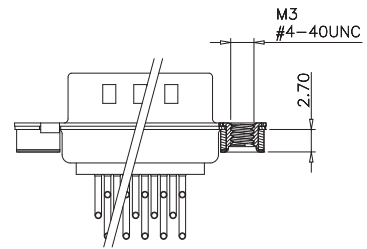
R/A PCB solder
Mounting

KH

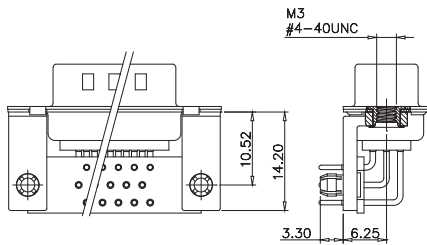
A1



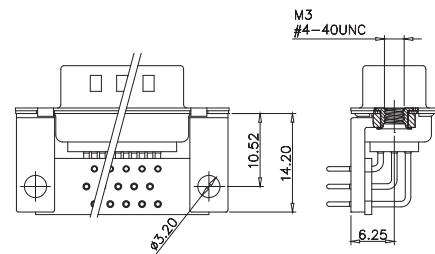
B1/B6



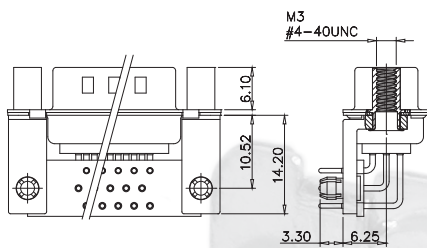
D1/D6



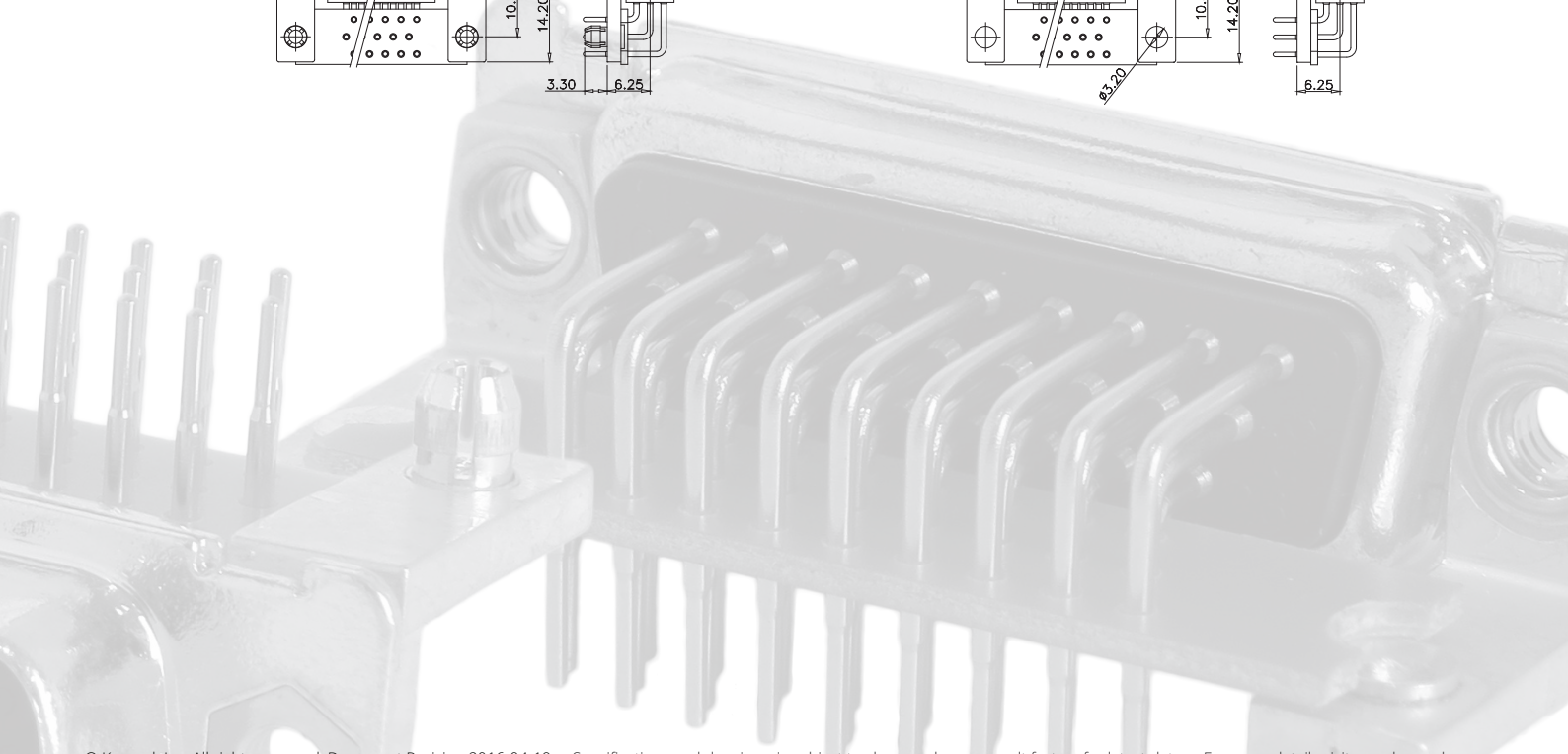
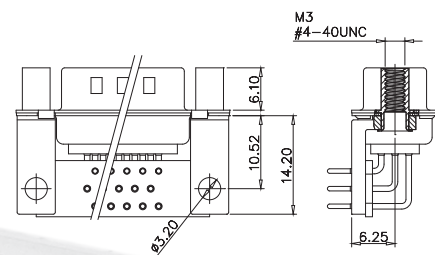
D2/D7



D3/D8



D4/D9



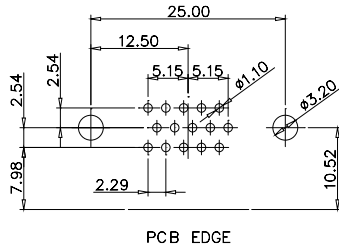
High Density KH Series

R/A PCB solder

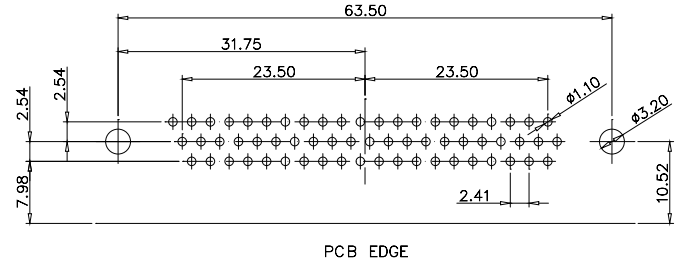
PCB Layout for Female connector

KH

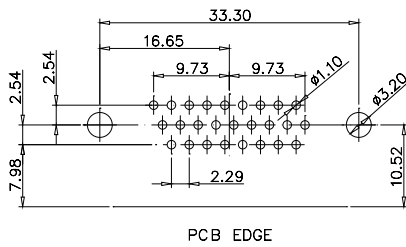
15 pos



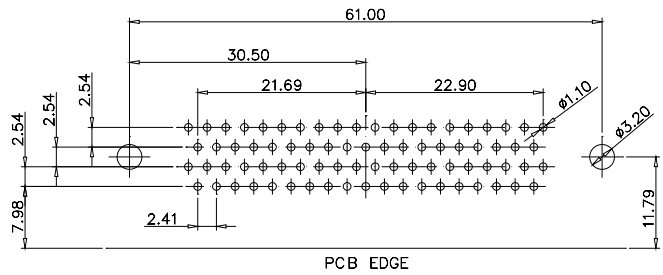
62 pos



26 pos



78 pos



44 pos

